

## APPLYING FOR LEGAL AID

Under certain conditions, you may be granted State aid to pay a lawyer to file a suit or to defend you in court.



### What is legal aid?

- It is a State aid
- Paid subject to means-testing
- Can cover up to 100% of your legal costs

### For which types of cases?

Legal aid can be requested to initiate a lawsuit or to defend you in the event of divorce, dismissal, over-indebtedness, appeal against an administrative authority, but also to enforce a court decision (payment of a bailiff), to pay for mediation, for example.

### Conditions to be met before applying for legal aid

#### 👉 Your resources

- Since 1 January 2021, the reference taxable income (revenu fiscal de référence - RFR) is taken into account ;
- You are not eligible for the scheme if your savings are greater than €11,261 and €33,790 if you have real estate assets.



To determine your resources, the following is taken into account :

- your income (wages, allowances, unemployment, active solidarity income - RSA, benefits, pensions, etc.) ;
- the income of other people in your household ;
- the number of dependants.

#### 2021 Scale

Number of dependants	Reference taxable income (RFR) in €	Cover (%)	Number of dependants	Maximum monthly resources (€)	Cover (%)
0	Less than or equal to € 11 262	100	3	Less than or equal to € 16 596	100
0	Between € 11 263 et € 13 312	55	3	Between € 16 597 € and € 18 646	55
0	Between € 13 313 et € 16 890	25	3	Between € 18 647 € and € 22 224	25
1	Less than or equal to € 13 289	100	4	Less than or equal to € 17 876	100
1	Between € 13 290 € and € 15 339	55	4	Between € 17 877 € and € 19 926	55
1	Between € 15 340 € and € 18 917	25	4	Between € 19 927 € and € 23 504	25
2	Less than or equal to € 15 316	100			
2	Between € 15316 € and € 17 366	55			
2	Between € 17 367 € and € 20 944	25			

#### 👉 Your situation

Vous devez être :

- of French nationality or an EU national;
- of foreign nationality with a legal status and lawfully and habitually resident in France.
- or an asylum seeker.

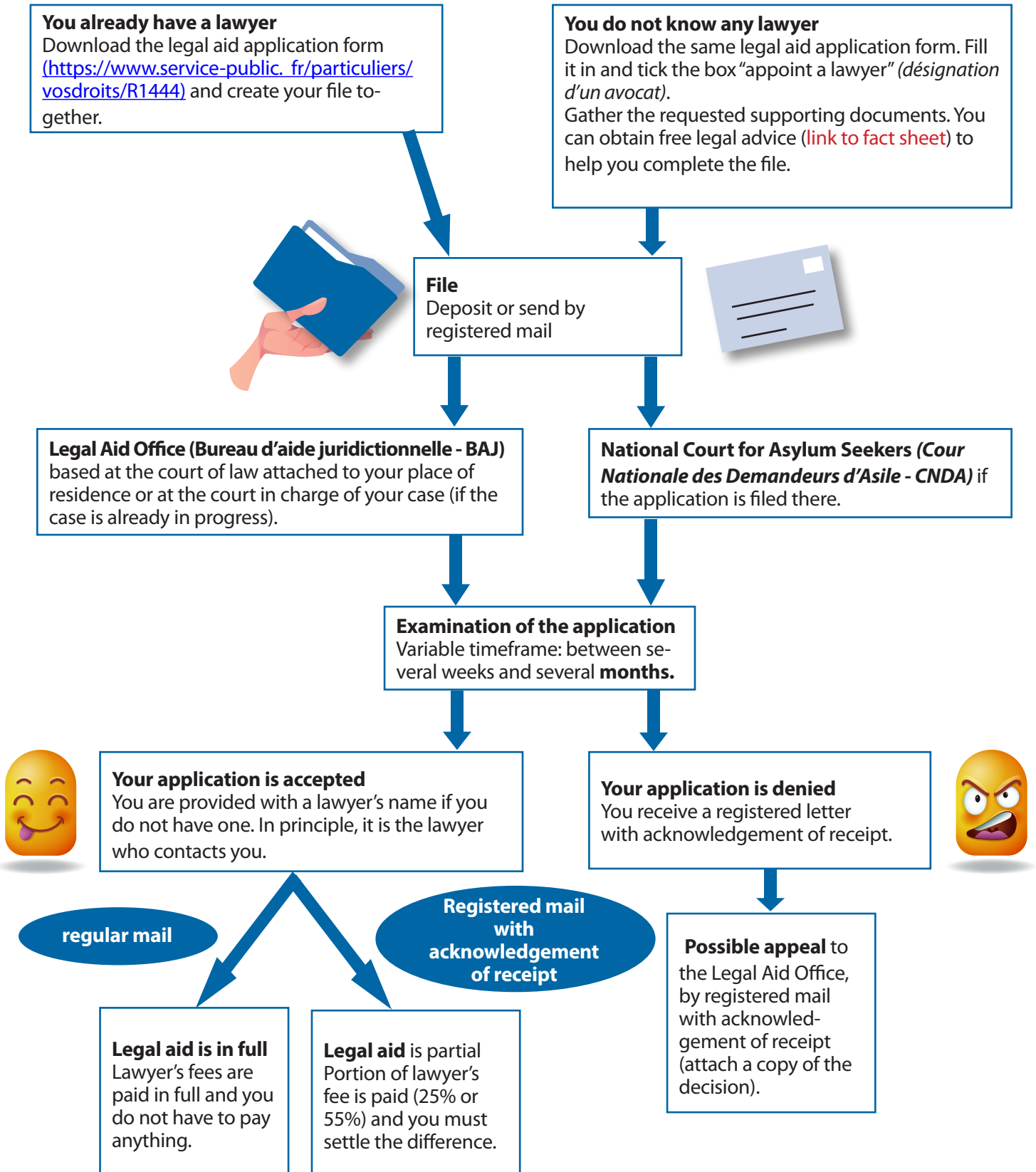


Foreign persons who are subject to deportation measures are also eligible: obligation to leave French territory (OQTF), deportation, etc., persons placed in detention centres or minors, for example.



You are not entitled to legal aid if your legal costs are covered by **your legal expenses insurance**.

## Do you meet the requirements? Create your application



### When can you apply for legal aid?

The aid may be requested before or during the case in question.  
It may also be requested at the end of proceedings, in order to enforce the court decision.